

# J. R. Clancy Inc.

ESTABLISHED 1885  
SYRACUSE, NEW YORK

May 26, 1941

ASBESTOS CURTAINS  
CONSOLE LIFTS  
CONTOUR CURTAINS  
COUNTERWEIGHT SYSTEMS  
ELECTRIC CURTAIN CONTROLS  
LIGHT BRIDGES  
ORCHESTRA LIFTS  
PAINT FRAMES  
PICTURE SHEET FRAMES  
ROPE AND CABLE  
REVOLVING STAGES  
SOUND HORN CRADLES  
SOUND HORN TRUCKS  
STAGE HARDWARE  
TRACTION DRIVE EQUIPMENT  
TRAVELER TRACKS  
WAGON STAGES

Warsaw Elevator Company  
Warsaw, New York

Attention: Mr. Bartholomew

Dear Mr. Bartholomew:

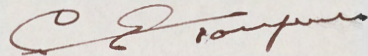
Do you have anything in a Floor Selector that would be suitable for an Orchestra Lift having up, intermediate and down and provision of course, for the usual stop button circuit?

The rise of the lift is 12'6" and we have provisions to drive this off the rack and pinion shaft.

Please send us full information by return mail or advise us if you are unable to furnish same.

Yours very truly,

J. R. CLANCY, INC.



President

CETompkins/A

*send cuts of Letchway selector and machine type selector,*

TO	V	READ
MAY 27 1941		
DBF		
JEN		
BFB		
WJT		
MSH		
JHB	✓	
GDP		
FILE		

OFFICES:  
BALTIMORE, MD.  
BUFFALO, N. Y.  
PHILADELPHIA, PA.  
ROCHESTER, N. Y.  
NEW YORK, N. Y.  
SPRINGFIELD, MASS.  
WASHINGTON, D. C.  
SYRACUSE, N. Y.  
UTICA, N. Y.

# Warsaw Elevator Co.

Manufacturers of  
**ELEVATORS.**

*Warsaw, N. Y.*

May 28, 1941

J. R. Clancy, Inc.  
Syracuse  
New York

Gentlemen: Attention: Mr. C. E. Tompkins  
President

This is in response to your letter of May 26th addressed to Mr. Bartholomew in regard to a floor selector for your orchestra lift. We are enclosing a blue print, sheet #233, that shows our hatchway type floor selector. This is tripped by a roller carried on the car as shown on the blue print.

We are also enclosing a cut, sheet #121-1P, of our machine-type floor selector. This type of selector is driven by a cable attached to the car and a drum. The gear on this machine is hooked up in such a manner that it makes approximately 300° of a revolution for a complete trip of the car. With this type machine it is possible to incorporate the top and bottom normal limits on the machine itself.

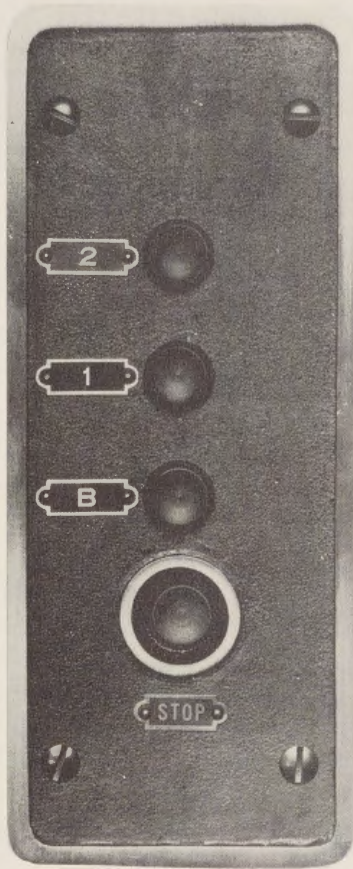
If you require additional information or diagrams, please advise us.

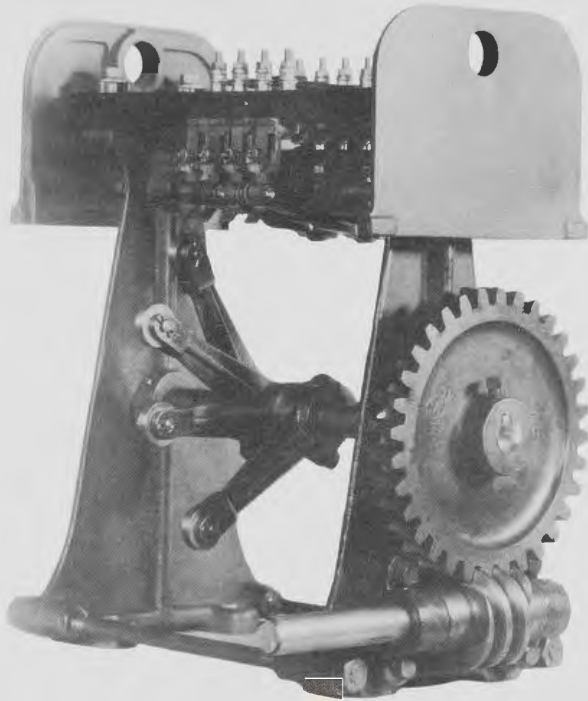
Very truly yours

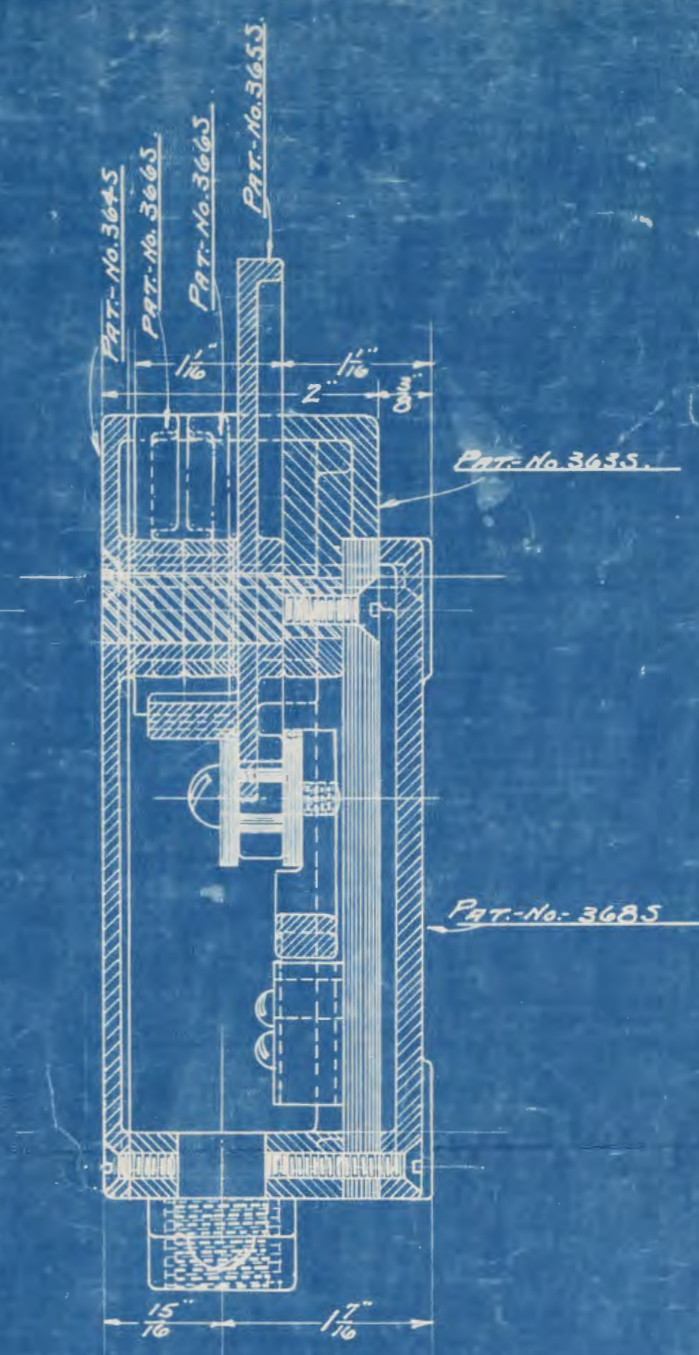
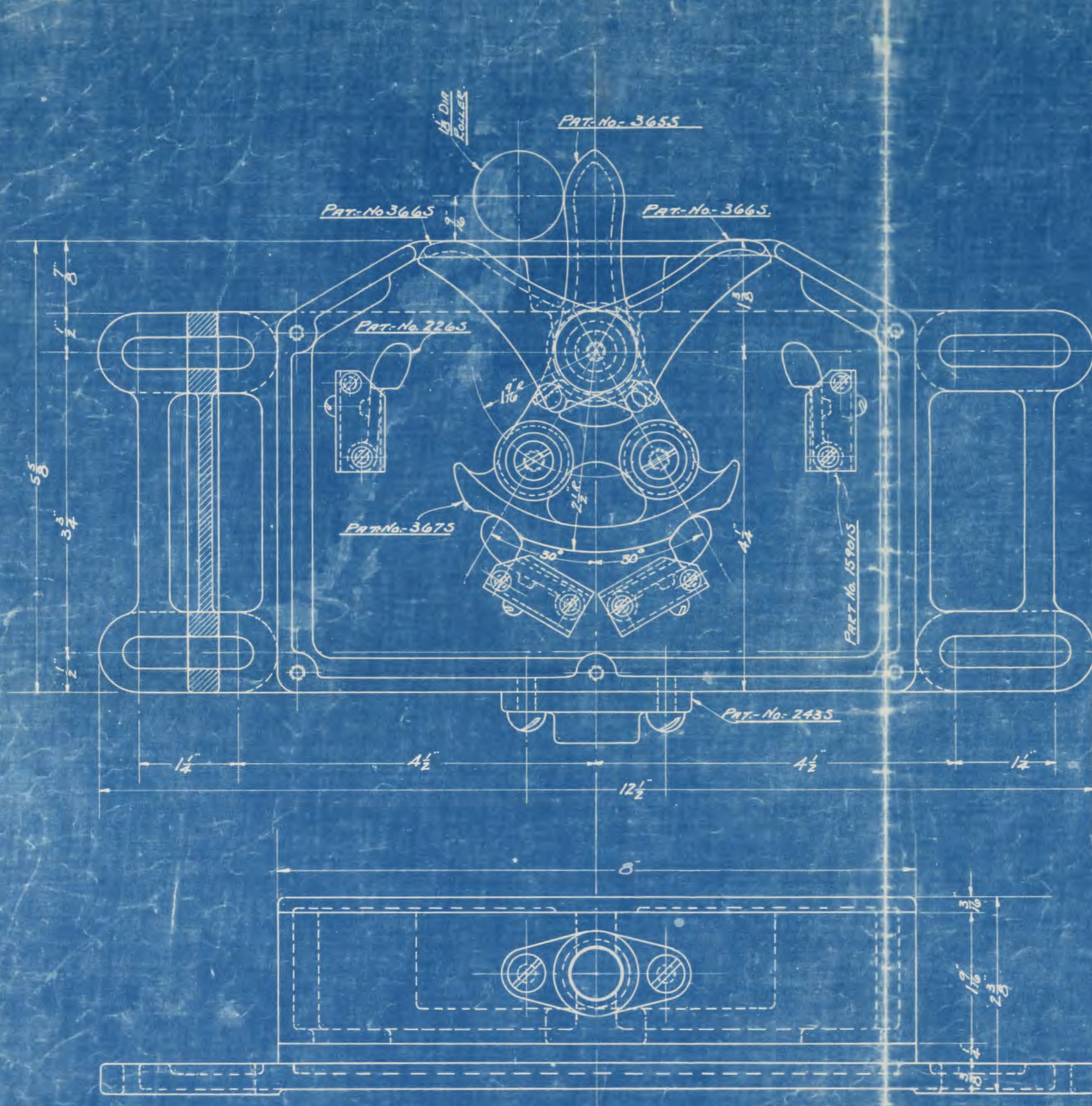
WARSAW ELEVATOR CO.

*Thomas F. Jarvis*  
T. F. Jarvis  
Electrical Department

TFJ:SAZ  
Enc.







SCALE = FULL SIZE

**GENERAL ARRANGEMENT**  
**TYPE B FLOOR SELECTOR**  
**HATCHWAY TYPE**

WARREN ELEVATOR COMPANY  
 WARREN, N.Y.

SHEET No.	CLASS	DATE
233	5	5-12-26