

THE JOHN & MABLE
RINGLING

MUSEUM OF ART

New Exhibition Offers Paintings By Whittredge

The Hudson River artist's work serves as a reflection of changing landscape trends

More than sixty paintings by Worthington Whittredge, one of the leading American landscape artists of the second half of the nineteenth century, will be presented in a new exhibition, organized by the Museum and opening in the New Wing on December 8.

The paintings will be on view until February 11. After that, "Worthington Whittredge" will travel to the Amon Carter Museum in Fort Worth, Texas; the Hunter Museum of Art in Chattanooga, Tennessee; the Corcoran Gallery of Art in Washington, D.C.; and the Newington-Cropsey Foundation in Hastings-on-Hudson, New York.

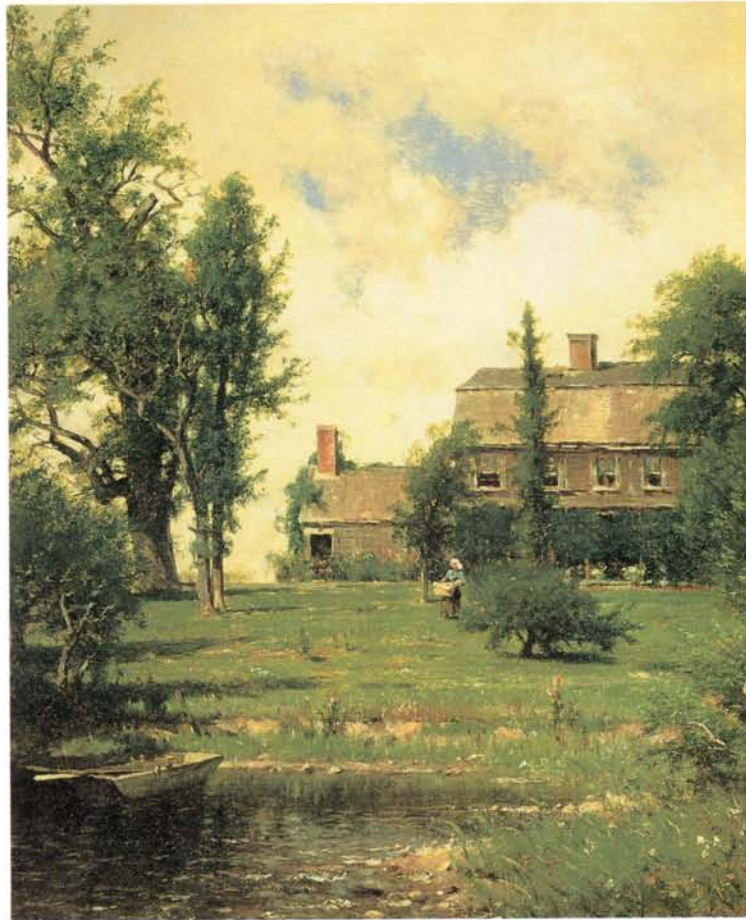
Whittredge, considered one of the premier American landscape artists of his time, belonged to the second generation of the Hudson River school of painters. His work is of particular interest because the evolution of his style serves as an index to the changing course of American landscape painting and the concepts it embodied.

Born in Ohio in 1820, Whittredge began as a sign painter in Cincinnati, then started painting landscapes in the mid-1840s. His early work, such as *Scene from Hawk's Nest, West Virginia* (1845), was influenced by the

Whittredge is considered one of the premier American landscape artists of his time.

style of Thomas Doughty and other members of the Philadelphia school. A ten-year stay in Europe beginning in 1849 added a darkly romantic

Continued on page 7



Worthington Whittredge, American, 1820-1910, *Landscape with Washerwoman*, early 1880s. Oil on canvas, 28½ x 24 in. Museum of Fine Arts, St. Petersburg, Florida.

'Projects 4' Highlights Unconventional Artist Izhar Patkin

Patkin's lifesize work *Don Quijote Segunda Parte* will be a unique execution

The fourth exhibition in the Museum's "Projects" series will feature sculpture by Izhar Patkin, an artist whose work is made to be physically experienced, not just passively viewed.

Don Quijote Segunda Parte consists of two identical lifesize sculptures of Don Quijote on his horse, Rosinante, reading the fake sequel to Cervantes' original book. One of the sculptures will be placed in each of the Museum's two Astor Galleries, the period rooms in the South Wing. These rooms, inspired by seventeenth- and eighteenth-century French interior design, will become part of the work; to supercharge these already

dramatic environments, Patkin will add window treatments and perhaps black rubber curtain-paintings over the mantelpieces.

Upon stepping into the Astor Galleries, the viewer will be immersed in Patkin's world, a world that raises questions about authorship, originality, and genius while presenting a spectacular visual display. This unconventional artist's work marks a most sophisticated return to narrative art. "My work tells a story—it is storytelling," Patkin explains.

Patkin, who was born in Israel in 1955, studied at the Corcoran School of Art in Washington, D.C., and in the independent study program at the Whitney Museum of Art in New York City. He first came to the

Continued on page 2

Museum Hosts Museum Directors' Association

The Museum will host the Association of Art Museum Directors for its prestigious mid-winter meeting on January 25 and 26.

The meeting will bring about 125 directors of art museums in both the United States and Canada to Sarasota. The museum directors met once before in Sarasota, in June 1962 when Kenneth Donahue was director.

The director, Dr. Laurence Ruggiero, will serve as host for this ninety-third session of the AAMD. In addition to viewing the Museum's permanent collection, the visiting museum directors will also have a chance to see the Museum's restoration work and new installations, as well as the "Worthington Whitledge" and "Projects 4: Izhar Patkin, Don Quijote Segunda Parte" exhibitions.

"The Museum is greatly honored by the Association of Art Museum Directors' acceptance of our invitation to meet in Sarasota," says Dr. Ruggiero. "It is a testimony to the importance of the Museum and its collections." ❧



Izhar Patkin,
American b.
Israel, 1955,
*Don Quijote
Segunda Parte,*
1987-1989.
Anodized
aluminum,
92 x 75 x 40
in. Edition of
five. Private
collection.
Courtesy of
the Holly
Solomon
Gallery, New
York City.

PATKIN

Continued from page 1

attention of the New York art world with an installation of a "painting" (actually ink) on a black rubber curtain that wrapped around all four walls of a single gallery in the Whitney Museum's "1987 Biennial Exhibition."

For Patkin, materials are a by-product of the narrative. "My work allows the viewer in, to participate," the artist says. "I feel my work is as far away from formalism as one can get."

"Projects" are small-scale exhibitions, generally made specifically for the Museum, by emerging artists who play a primary role in formulating the issues that are vital to contemporary art. An established artist may be invited to participate in the series if his or her work is particularly important in contemporary art.

"Projects 4: Izhar Patkin, Don Quijote Segunda Parte" opens in the Astor Galleries on December 15 and will be on view through February 11. A members' walk-through with the artist will be held on Friday, January 15, at 10 a.m.; Patkin will speak in a

"Dialogue with the Artist," which is open to the public, at 1 p.m. that same day. ❧

National Arts Club Cites Museum for Excellence

The Museum was recently awarded the annual "Citation of Honor" of the National Arts Club at a gala ball in New York City.

The club's national awards program honors excellence in visual arts, music, literature, theater, film, and video. Governor Bob Martinez

accepted the award on behalf of the Museum.

In addition to the governor, the Museum's director, Dr. Laurence Ruggiero, spoke at the ceremony, as did John E. Stefany, chairman of the Museum's Board of Trustees, and State Senator Bob Johnson. ❧



Governor Bob Martinez, center, accepts the Citation of Honor award from National Arts Club President O. Aldon James, Jr. Looking on, left to right, are State Senator Bob Johnson, Museum Director Dr. Laurence J. Ruggiero, and Robert Soran, president of Tropicana Products, Inc., master of ceremonies.

Meet the Staff:

Personnel Manager Diane Melton Is Staff and Management Resource



Diane Melton

Appointed as personnel manager last spring, Diane Melton has quickly become a familiar face at the Museum.

Not only is she often the first person a prospective employee meets when applying for a position at the Museum, Melton also serves as a liaison between the Museum's management and its employees, resolving a wide variety of benefit issues, tracking vacations and sick leave, and, perhaps most importantly, working with senior management on all of the Museum's human-resource plans and policies.

Melton, a native of Sarasota County, joined the Museum after

'The most challenging thing about personnel work is its constant change.'

sixteen years with Manatee Community College, where she was in the college's personnel department. Her extensive personnel qualifications include a specialty in the area of benefits as well as general human-resource management. "The most challenging thing about personnel work is its constant change," Melton says. "From day to day you never know what the mail or the telephone will bring, what questions will come up from management or from the staff, or what problems you'll have to solve."

Automating the Museum's personnel department is one project that Melton is undertaking to help streamline organizational procedures. Although some of the department's operations, such as payroll records, are already computerized, the transfer of all person-

nel data into computer files "will help the Museum's employees as well as applicants for positions at the Museum get all the information they need more easily," she explains.

All job descriptions will soon be on file in the computer, making it easier for Melton to update or crosscheck them. She is developing a computerized organizational chart, as well.

Already, in the relatively short time she has been with the Museum, Melton has won kudos from the director and staff for her sensitivity and efficiency. "I am delighted to have such a caring and effective person in that very important position," says the director, Dr. Laurence Ruggiero.

Melton, who is completing work toward a degree in management/human resources at the University of South Florida, has associate degrees in science and the arts from Manatee Community College. She is a member of the Sarasota Human Resources Association.

After spending most of her professional career managing human resources in education, Melton says she is enjoying the artistic environment of the Museum. One of her

'I'm here to help our employees as well as to help management.'

first accomplishments as personnel director was to develop an orientation tour for new employees. "I took the tour myself, and learned so much," Melton says enthusiastically. "I enjoy learning about the works of art in the collection."

Melton also enjoys the opportunity to work with Museum employees in her capacity as personnel manager. "I find it very fulfilling to be able to help people," she says. "I'm here to help our employees as well as to help management, and that's a very rewarding position to be in." 🐾

Programs Help Young People Understand Art

The Museum's fall/winter series of programs for students is now underway, giving young people from local schools a chance to view and experience various types of art.

In September, a workshop for about twenty upper elementary-school students was held in conjunction with the exhibition, "Featuring Florida 2: Three from Tallahassee." The students participated in a hunt, discussed questions about the nature

of art, and created their own artwork.

"I asked the students the question, 'What is art?' and got some interesting responses," says Susan Hazelroth, acting head of the Museum's education department. "Their answers ranged from 'a design' to 'poetry' to 'pictures.' One student described art as 'expressing your words, only in a different way—in a way where you have to look for what the artist is saying.'" 🐾



Upper elementary-school students learned to understand and appreciate contemporary art at a recent program held at the Museum in conjunction with the 'Featuring Florida 2: Three from Tallahassee' exhibition in the New Wing.

Museum Hours:

Daily 10 a.m. to 6 p.m.
Thursday until 10 p.m.

DECEMBER

- 6 WEDNESDAY**
"Speaking of Art" program continues • Outreach art-appreciation program for older adults • 10 a.m. • The Senior Friendship Center • Call 355-5101, ext. 287, for details



Nancy Hine, the Museum's community program specialist, points out details of a painting to participants in the "Speaking of Art" program, organized in conjunction with The Senior Friendship Center.

- 7 THURSDAY**
General Members' Preview • "Worthington Whittredge" exhibition • 5:30 p.m. • New Wing
- 8 FRIDAY**
"Worthington Whittredge" exhibition opens to the public • New Wing
- 8 FRIDAY**
Members' walk-through with Dr. Anthony F. Janson, curator • "Worthington Whittredge" exhibition • 10 a.m. • New Wing
- 9 SATURDAY**
Symposium in conjunction with "Worthington Whittredge" exhibition • 10 a.m.-noon and 2-5 p.m. • Asolo Theater • Open to the public, free of charge
- 10 SUNDAY**
Band concert in conjunction with "Worthington Whittredge" exhibition • The Florida Symphonic Band • 3-5 p.m. • Asolo Theater • Open to the public, free of charge
- 13 WEDNESDAY**
"Speaking of Art" program • See December 6 listing

- 13 WEDNESDAY**
"Dialogues for Families" in conjunction with "Worthington Whittredge" exhibition • Noon • New Wing • Members free, non-members pay regular Museum admission price

- 14 THURSDAY**
Public Preview • "Projects 4: Izhar Patkin, Don Quijote Segunda Parte" exhibition • 5:30-7:30 p.m. • Astor Galleries

- 15 FRIDAY**
"Projects 4: Izhar Patkin, Don Quijote Segunda Parte" exhibition opens to the public • Astor Galleries

- 15 FRIDAY**
Members' walk-through with the artist • "Projects 4: Izhar Patkin, Don Quijote Segunda Parte" exhibition • 10 a.m. • Astor Galleries

- 15 FRIDAY**
"Dialogue with the Artist" in conjunction with "Projects 4: Izhar Patkin, Don Quijote Segunda Parte" exhibition • 1 p.m. • Asolo Theater • Open to the public, free of charge

- 18 MONDAY**
Members' Council meeting • 10 a.m. • Asolo Theater • All members welcome

- 20 WEDNESDAY**
"Speaking of Art" program • See December 6 listing

- 20 WEDNESDAY**
"Dialogues for Families" in conjunction with "Worthington Whittredge" exhibition • Noon • New Wing • Members free, non-members pay regular Museum admission price

