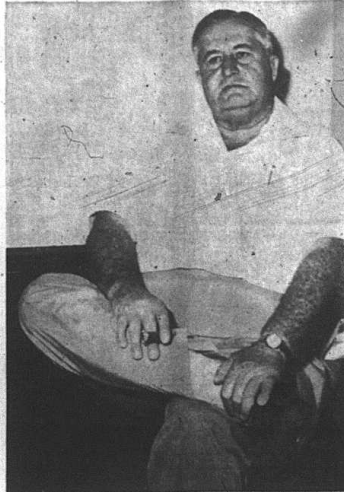


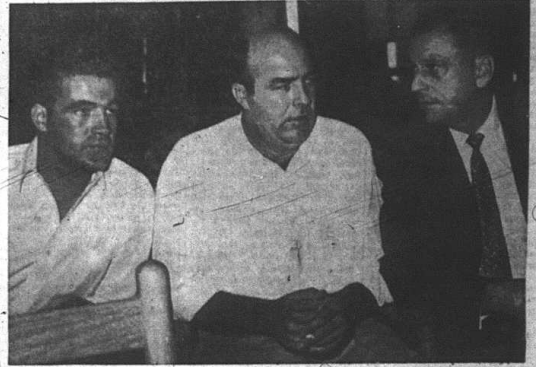
Tense Scenes Mark Atmosphere In Sumner, Miss. As Till Trial Moves In



THESE TWO PICTURES are a courtroom study by Argus photographer William B. Franklin of Mrs. Carolyn Bryant, attractive 21-year-old white woman who "fingered" Emmett Louis Till as the youth who insulted her in a Money, Miss., grocery store. Her husband, Roy, and brother-in-law, J. W. Milam, are on trial for Till's murder.



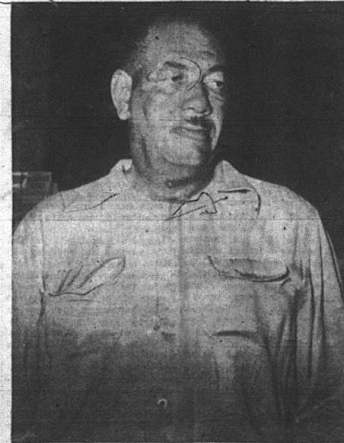
TALLAHATCHIE COUNTY SHERIFF H. C. Strider poses here for Argus photographer William B. Franklin. Strider told newsmen he had received 100 letters threatening his life since the lynch-murder of Emmett Louis Till.



DEFENDANTS IN THE Till murder trial are, from the left, curly Roy Bryant and his half-brother, balding and burly J. W. Milam, shown conferring with one of a battery of five defense attorneys during a brief recess in the trial. Bryant and Milam admitted spiriting young Till from the home of his uncle but denies killing him.



THIS SCENE WAS REPEATED every day as spectators pushed their way into the small Sumner county courthouse during the Till murder trial. Negroes and whites were separated upon entering the courtroom.



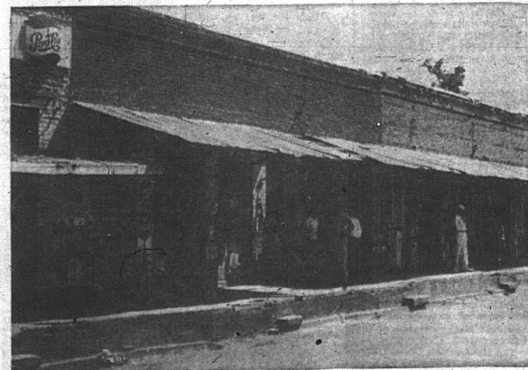
TAYLOR HAYES, a Memphis funeral director, drove Mrs. Mamie Bradley and members of her traveling party to Sumner, Miss., following their arrival at the Memphis airport early Tuesday.



CIRCUIT JUDGE LURTIS SWANGO is hearing the case of two Mississippi white men accused of the lynch-murder of a 14-year-old Negro lad. The hat on the left of Judge Swango was used to draw names of men selected to serve as jurors.



MRS. MAMIE BRADLEY, mother of the slain 14-year-old Chicago youth, is totally surrounded by members of the press straining to hear every word uttered by the woman following her arrival in court Tuesday.



THIS IS THE "MAIN DRAG" for Negroes in Sumner, Miss., where the sensational Till murder trial is being conducted. The row of businesses here include cafes, taverns and small grocery stores.



MRS. RUBY HURLEY, militant NAACP regional field representative, and Medgar W. Evers, Mississippi field representative, appeared briefly in Sumner during the trial even though their organization is despised by many whites in the area.



DISTRICT ATTORNEY GERALD CHATHAM (left) is in charge of the prosecution of two Mississippi white men accused of the lynch-murder of a 14-year-old Chicago youth visiting the state. To his left is R. B. Smith III, a former FBI agent assisting Chatham.